

## Technical Datasheet

# Cinquasia® Magenta D 4500 J

very clean and chromatic blue-shade magenta, excellent chroma and light-fastness

Colour Index™	no C.I.
Chemistry	Quinacridone



ink jet print on photo paper, 100 %  
Alkyd / Melamine



ink jet print on photo paper, 75 %  
Alkyd / Melamine



ink jet print on photo paper, 50 %  
Alkyd / Melamine



ink jet print on photo paper, 30 %  
Alkyd / Melamine

### Physical Properties

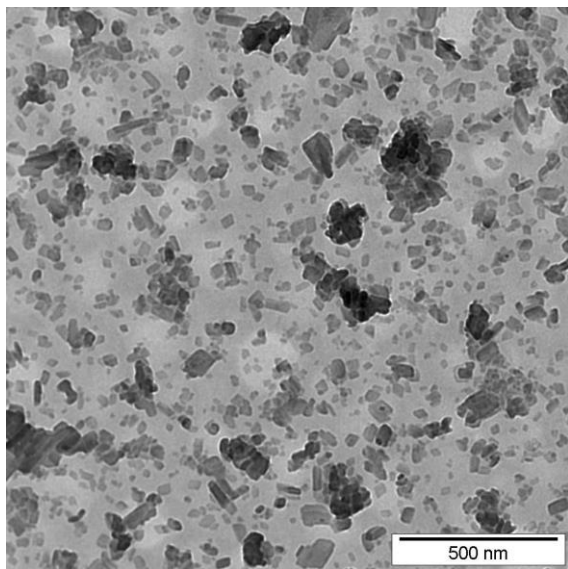
Bulk density	0,37 kg/L	Oil absorption	59 g/100g
Bulk volume	2,7 L/kg	Specific surface	73 m <sup>2</sup> /g

InkSystem	
Oil-based	<input type="radio"/>
UV-Curable	<input checked="" type="radio"/>
Solvent-based	<input checked="" type="radio"/>

Printing Technology	
Digital Electrophotography	<input type="radio"/>
Digital Inkjet	<input checked="" type="radio"/>
Flexographic / Gravure	<input type="radio"/>
Metal Deco	<input type="radio"/>
Offset inks	<input type="radio"/>
Screen printing	<input type="radio"/>

Solvent Fastness	
Butyl acetate	4 - 5
Ethyl acetate	4
MEK	3
DI Water	5
White spirit	5
Xylene	5
Ethanol	4
Toluene	5

### Electron Microscope Image



## Note

Although the information presented here is believed to be reliable, Sun Chemical Corporation makes no representation or guarantee to its accuracy, completeness or reliability of the information. All recommendations and suggestions are made without guarantee, since the conditions of use are beyond our control. There is no implied warranty of merchantability or fitness for purpose of the product or products described herein. In no event shall Sun Chemical Corporation be liable for damages of any nature arising out of the use or reliance upon the information. Sun Chemical Corporation expressly disclaims that the use of any material referenced herein, either alone or in combination with other materials, shall be free of rightful claim of any third party including a claim of infringement. The observance of all legal regulations and patents is the responsibility of the user.

Greyscale (GS) 5 (best) - 1 (worst); Blue Wool Scale (BWS) 8 (best) - 1 (worst)

Highly recommended  recommended  Potentially recommended