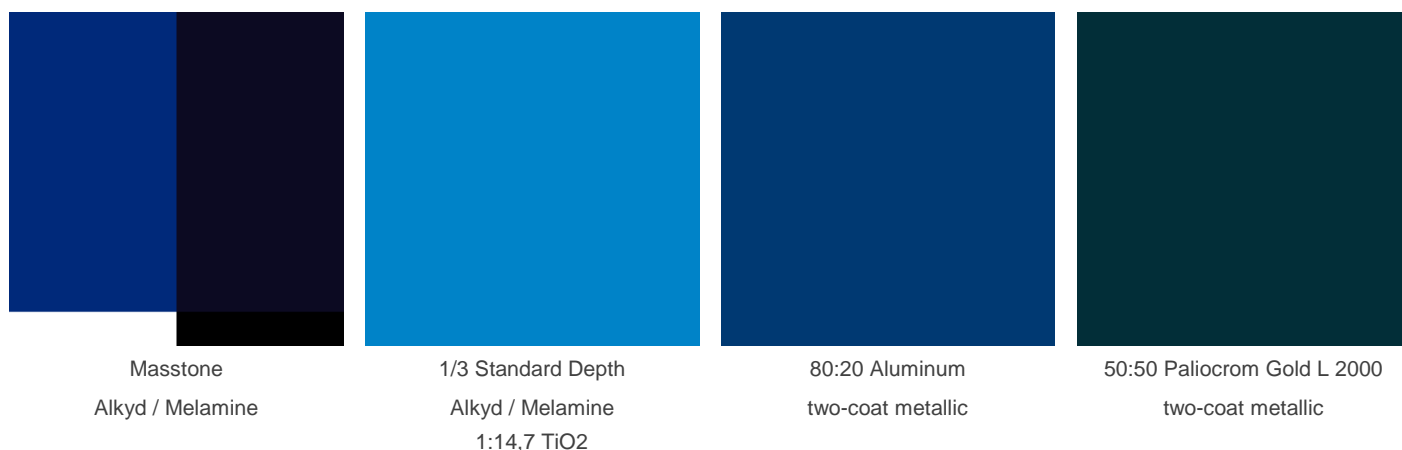


Technical Datasheet

Heliogen® Blue L 6600 F

particularly reddish epsilon phthalocyanine blue with high chroma, high tinting strength and excellent resistance to flocculation

Colour Index™	P.B. 15:6 74160
Chemical Class	Cu-phthalocyanine, epsilon-modified



Weathering or Light Fastness

Alkyd / Melamine two-coat metallic

Masstone	5
1/3 Standard Depth	4 - 5
80:20 Aluminum	5
50:50 Paliocrom Gold L 2000	5

Physical Properties

Bulk volume	2,3 L/kg	Conductivity	< 200 µS/cm
Density	1,6 g/cm³	Dry content	≥ 98,5 %
pH	5 - 9	Oil absorption	50 g/100g
Specific surface	73 m²/g	Thermal resistance	350 °C

Chemical Fastness

of Masstone over white in Alkyd / Melamine

Substance	value (GS)
-----------	------------

Alkali (2% NaOH)	5
------------------	---

Acid (2% HCl)	5
---------------	---

Suitability in Medium

Air-drying alkyd	●
------------------	---

Amine-curable	○
---------------	---

Acid-curable	●
--------------	---

Acrylic / isocyanate	●
----------------------	---

Water-based	●
-------------	---

Baking finishes	●
-----------------	---

Suitability in Industry

Automotive	●
------------	---

Coil	●
------	---

Decorative	●
------------	---

General Industrial	●
--------------------	---

Powder	●
--------	---

Wood	●
------	---

Solvent Fastness

Butyl acetate	4
---------------	---

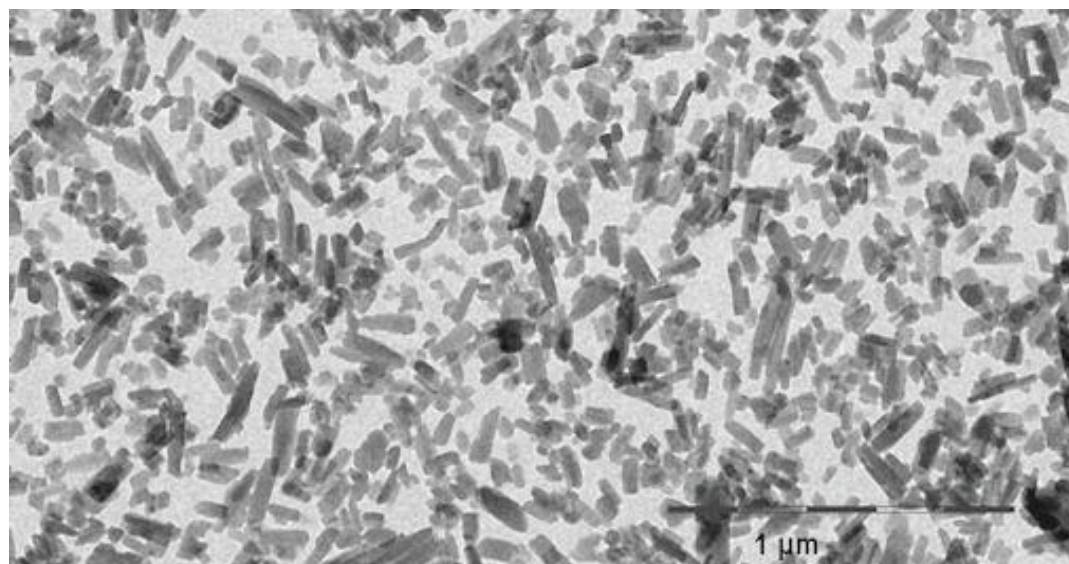
MEK	3 - 4
-----	-------

White spirit	5
--------------	---

Xylene	4
--------	---

Ethanol	4 - 5
---------	-------

Electron Microscope Image



Note

Although the information presented here is believed to be reliable, Sun Chemical Corporation makes no representation or guarantee to its accuracy, completeness or reliability of the information. All recommendations and suggestions are made without guarantee, since the conditions of use are beyond our control. There is no implied warranty of merchantability or fitness for purpose of the product or products described herein. In no event shall Sun Chemical Corporation be liable for damages of any nature arising out of the use or reliance upon the information. Sun Chemical Corporation expressly disclaims that the use of any material referenced herein, either alone or in combination with other materials, shall be free of rightful claim of any third party including a claim of infringement. The observance of all legal regulations and patents is the responsibility of the user.

Greyscale (GS) 5 (best) - 1 (worst); Blue Wool Scale (BWS) 8 (best) - 1 (worst)

suitable potential suitable not suitable